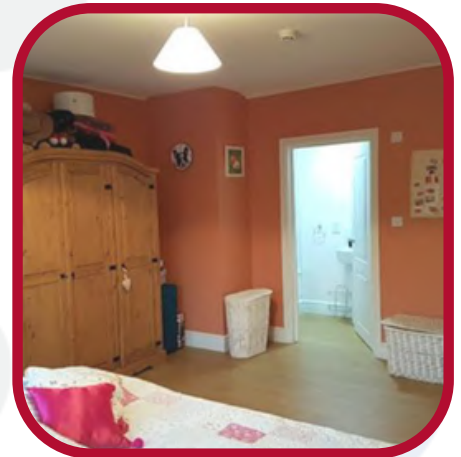


The Cherry Tree is a registered residential location offering 24 hour support. It specialises in supporting adults with learning disabilities, Autism and complex health needs. The Cherry Tree is situated in Cheam in the London Borough of Sutton.



Introducing The Cherry Tree

Cherry Trees is a 24 hour residential home for four adults, designed to support people with learning disabilities, Autism and complex needs. We aim to support people living in The Cherry Tree to lead active lives in which their individuality, independence, dignity and respect are maintained.

We fully embrace person centred planning, ensuring the person we support is at the centre in the delivery of our high quality care and support. People we support who choose to live at The Cherry Tree are encouraged to participate in a wide range of activities of their interest.

About The Cherry Tree

- The home offers 3 upstairs rooms all with en-suite facilities.
- There is also a ground floor self-contained flat which includes a kitchen and bedroom with en-suite facilities.
- The home is located close to local shops, pubs and restaurants, and a bus ride away to cinema and leisure centre.
- Good public transport links, enabling easy access to further facilities within the town of Sutton. There is also a train station in Cheam with a regular service to London.

Enhancing the lives of the people we support 

The Cherry Tree

114 Sandy Lane, Sutton,
SM2 7ES

SALUTEM WE ARE HUMAN KIND
CARE & EDUCATION

Our Services

- Are outcome-focussed and highly person-centred.
- Provide 24/7 residential care.
- Provide activities tailored to the interest of the individuals we support both in and out of the home.
- Are holistic, with person-centred care and support developed in collaboration with the people we support, their families and a multi-disciplinary team of health care professionals.

At a time that is right, we are able to offer a pathway to further independent living. This might include accessing one of our Supported Living or Outreach services. We strongly believe that every person we support should receive the right level of care in an environment that meets their needs wants and wishes. Please talk to us about how we can work with you to develop a transitions package.

"The Cherry Tree have surpassed our expectations since [person we support] has moved in. He seems more confident within himself and his life skills have come on leaps and bounds. We feel his emotional and physical needs are met and that we as a family have been supported throughout the whole process."

- Family member of a person we support



The Cherry Tree

To make a referral, for further enquiries and for more information:

01753 255777

BusinessDevelopment@
salutemsharedservices.co.uk

www.salutemcareandeducation.co.uk

The Cherry Tree
114 Sandy Lane
Sutton
SM2 7ES



Enhancing the lives of the people we support 



salutemcareandeducation.co.uk

TOP
100
INSPIRING
WORKPLACES
WINNER 2023
GLOBAL